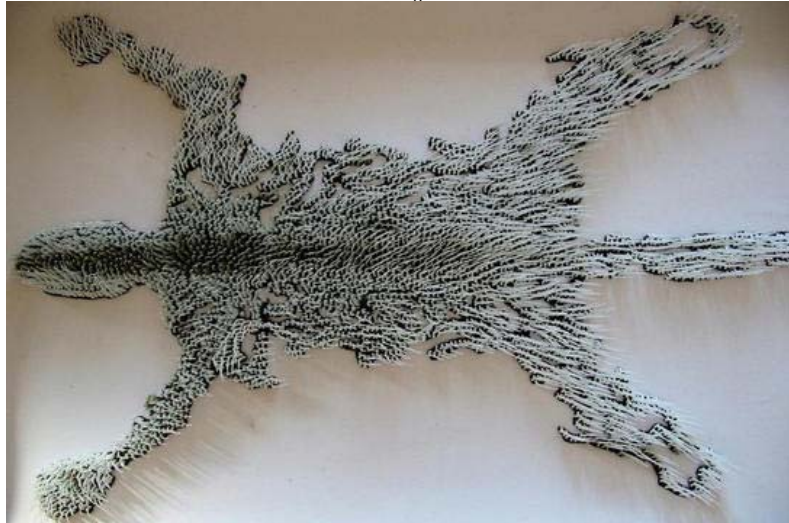


Dafna Kaffeman: What Could Be Sweeter Than Going to Paradise?

Like



1 of 4

Dafna Kaffeman, *Animality*, 2003. White flame worked glass on black silicon. 5 cm x 80 cm x 100 cm. Courtesy of Lorch + Seidel Galerie, Berlin.

 [Full Size](#)

Israeli artist Dafna Kaffeman's delicate glass sculptures mimic organic forms including leaves, fur and flowers. Her small works and large scale installations often deal with issues raised by the Israeli-Palestinian conflict. The installation "Mantis Religiosa" is based on a statement made by a young Palestinian. It consists of lifelike lampworked glass objects and found handkerchiefs embroidered by Israeli men.